

# CATAMARAN CATLANTE 720



 **CATLANTE**  
CATAMARANS

# CATLANTE 720

## THE PLEASURE OF EXCELLENCE

Roomier, more comfortable, faster.  
Take your pleasure to the next level.

Built in the Lorient shipyard, the Catlante 720 is resolutely dedicated to passenger comfort and safe cruising. Its exceptional sailing qualities and top-of-the-range features make the Catlante 720 the ideal ally for your cruises.

The Catlante 720 is perfectly suited to privatization with friends or family for unforgettable cruises.

### INFORMATION & BOOKING

+33 (0)1.55.20.90.90, 9am-8pm, 7 days a week  
[www.catlante.com](http://www.catlante.com)



## GENERAL FEATURES

- › Complies with CE standards Category A - 16,
- › NUC classification (professional vessels),
- › Overall length: 21,40 m,
- › Maximum width: 8,80 m,
- › Hull width: 2,40 m,
- › Draft: 1,40 m,
- › Air draught: 25,15 m,
- › Loaded displacement: 30000 kg,
- › Fuel capacity: 2500 L,
- › Fresh water capacity: 1580 L,
- › Watermaker: 240 L/h.



## INTERIOR COMMON AREAS

- › Professional kitchen in the saloon, ovens, hob, dishwasher, 2 fridges, 1 freezer + 2 in bunkers, coffee machine...
- › Central WiFi (except Seychelles, and only in areas where the signal is accessible).
- › Forward saloon with reading table, large U-shaped bench seat, fantastic 270° sea view and five ventilation panels.





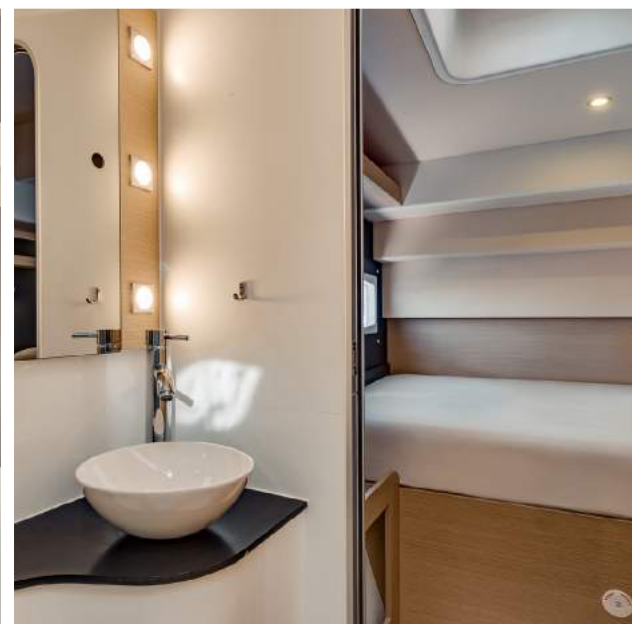
## CABINS

### 6 passenger cabins for 2 or 3 persons:

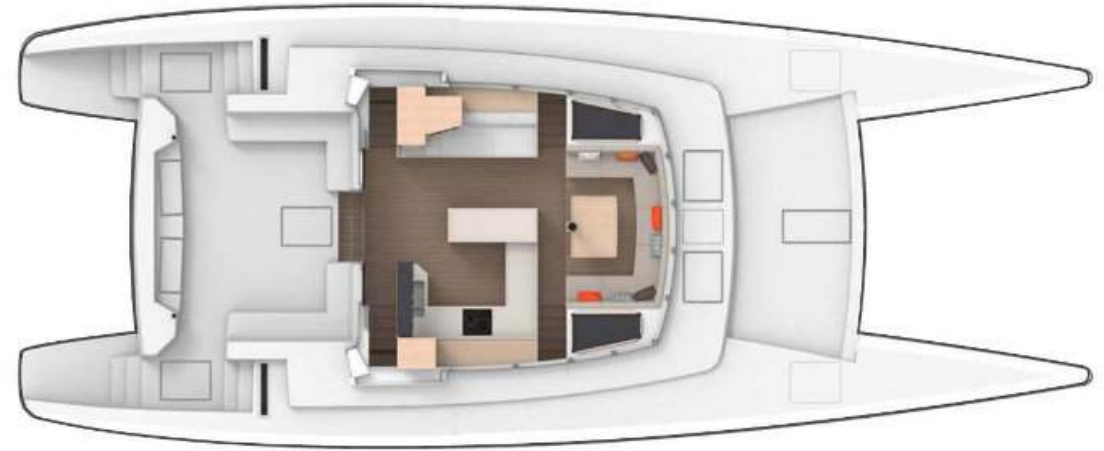
- › 2 aft double cabins: one 2 m x 1.40 m bed,
- › 2 central cabins (double or twin): either one 2 m x 1.40 m bed, or 2 2 m x 0.70 m beds,
- › 2 forward triple cabins: 1 bed 2 m x 1.40 m and 1 bed 2 m x 0.75 m for a third person.

### Each passenger cabin is equipped with:

- › Storage space,
- › Individual reading lights,
- › Private bathroom with shower, washbasin and mirror, hairdryer, wardrobe, electric freshwater WC, 220 V sockets,
- › Bed linen, towels, beach towels (foutas),
- › Individually-controlled reversible air conditioning,
- › Fan,
- › 1 ventilation deck panel in the shower room,
- › 1 ventilation deck panel in the cabin,
- › 1 hull porthole with integrated sash.



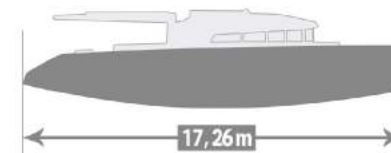
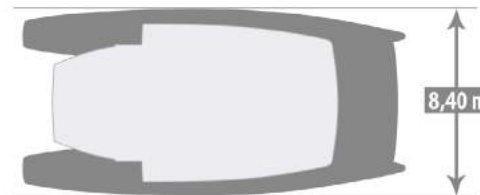
# LAYOUT



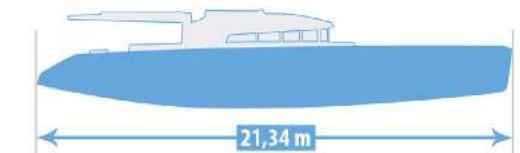
## COMPARISON OF CATLANTE 600 AND CATLANTE 720 CATAMARANS

The Catlante 720, with a weight almost equivalent to that of the Catlante 600 thanks to the massive use of carbon fiber for the structure and much more stretched lines, has even greater marine qualities than its predecessor. The significant increase in volume gives it even greater habitability.

*Catlante 600*



*Catlante 720*





## OUTDOOR COMMON AREAS

- › A vast rear deck protected by the fly bridge features large bench seats, chairs and two tables for 6/8 people,
- › Rigid front platform with balconies and integrated teak seats,
- › The fly bridge (upper deck) is equipped with sunbathing mattresses and seating around the cockpit.
- › Large rear skirts for easy boarding or swimming, with shower and swim ladder,
- › Numerous handrails for safety,
- › Nautical equipment at your disposal: flippers, masks and snorkels, « swim-out » shower at the rear of the boat, « sun » mattresses. 2 underwater spotlights for lighting the night swimming area. 2 sea kayaks and 2 paddles.

### Dinghy:

- › The Catlante 720 catamaran is equipped with a motorized inflatable tender. Piloted by the captain or his first mate, it enables passengers to be dropped off at anchor.







[www.catlante.com](http://www.catlante.com)

332, Les Bureaux de la Colline, 1 Rue Royale 92210 ST CLOUD  
Rcs Nanterre 451 543 730